

## DEDB 300/500 ZG1 BUHAR/KIZGIN YAĞ BAŞLIĞI (DN 15 - DN 100) DEDB 300/500 ZG1 STEAM/HOT OIL JOINT CAST



### Çalışma Limitleri

Buhar	Kızgın Yağ
Basınc: $\leq 17$ bar	Basınc: $\leq 7$ bar
Sıcaklık: $\leq 200^\circ\text{C}$	Sıcaklık: $\leq 230^\circ\text{C}$
Devir: 750 d/dk	Devir: 750 d/dk

### Operating Limits

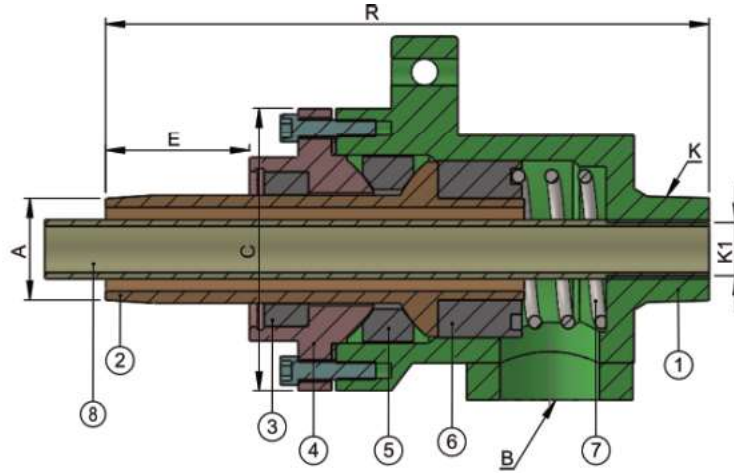
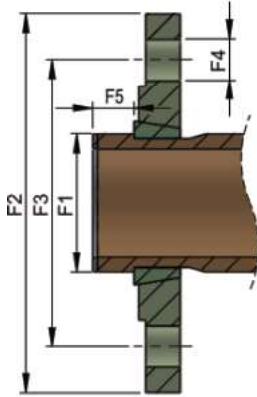
Steam	Hot Oil
Pressure : $\leq 17$ bar	Pressure : $\leq 7$ bar
Temperature : $\leq 200^\circ\text{C}$	Temperature : $\leq 230^\circ\text{C}$
Rotation: 750 Rpm	Rotation: 750 Rpm

### Parça İsimleri

1. Gövde
2. Döner Boru
3. Boğaz Yataklaması
4. Kapak
5. Küresel Yataklama
6. Alt Baskı Yataklaması
7. Yay
8. Kondens Borusu

### Parts

1. Body
2. Rotary Pipe
3. Sealing Carbon
4. Cap
5. Sealing Carbon
6. Sealing Carbon
7. Spring
8. Supply Pipe



DN	MODEL	TİP	A	B	C	R	E	K1	K	F1	F2	F3	F4	F5
15	DEDB300-500	DIŞLİ	1/2"	1/2"	93	204	46	1/8"	1/2"					
20	DEDB300-500	DIŞLİ	3/4"	3/4"	93	204	46	1/4"	3/4"					
20		FLANŞLI	DN20	3/4"	93	204	46	1/4"	3/4"	25,9	105	75	14x4	11,5
25	DEDB300-500	DIŞLİ	1"	1"	98	230	58	3/8"	1"					
25		FLANŞLI	DN25	1"	98	230	58	3/8"	1"	32,2	115	85	14X4	11,5
32	DEDB300-500	DIŞLİ	1.1/4"	1.1/4"	118	252	64	1/2"	1.1/4"					
32		FLANŞLI	DN32	1.1/4"	118	252	64	1/2"	1.1/4"	40,9	140	100	18X4	13
40	DEDB300-500	DIŞLİ	1.1/2"	1.1/2"	128	272	65	3/4"	1.1/2"					
40		FLANŞLI	DN40	1.1/2"	128	272	65	3/4"	1.1/2"	47,2	150	110	18X4	13
50	DEDB300-500	DIŞLİ	2"	2"	156	307	67	1"	2"					
50		FLANŞLI	DN50	2"	156	307	67	1"	2"	58,8	165	125	18X4	16,5
65	DEDB300-500	DIŞLİ	2.1/2"	2.1/2"	185	346	81	1.1/4"	2.1/2"					
65		FLANŞLI	DN65	2.1/2"	185	346	81	1.1/4"	2.1/2"	72	185	145	18X4	19,5
80	DEDB300-500	DIŞLİ	3"	3"	195	376	92	1.1/2"	3"					
80		FLANŞLI	DN80	3"	195	376	92	1.1/2"	3"	88	200	160	18X8	23

NOT: 4" - 5" - 6" - 7" buhar ve kızgın yağ başlıklarımız müşterilerimizin taleplerine ve ürünün kullanılacağı ortama göre özel olarak imal edilmektedir.  
Our 4" - 5" - 6" - 7" steam and hot oil joints are specially manufactured according to the demands of our customers and operating conditions in which the product will be used.